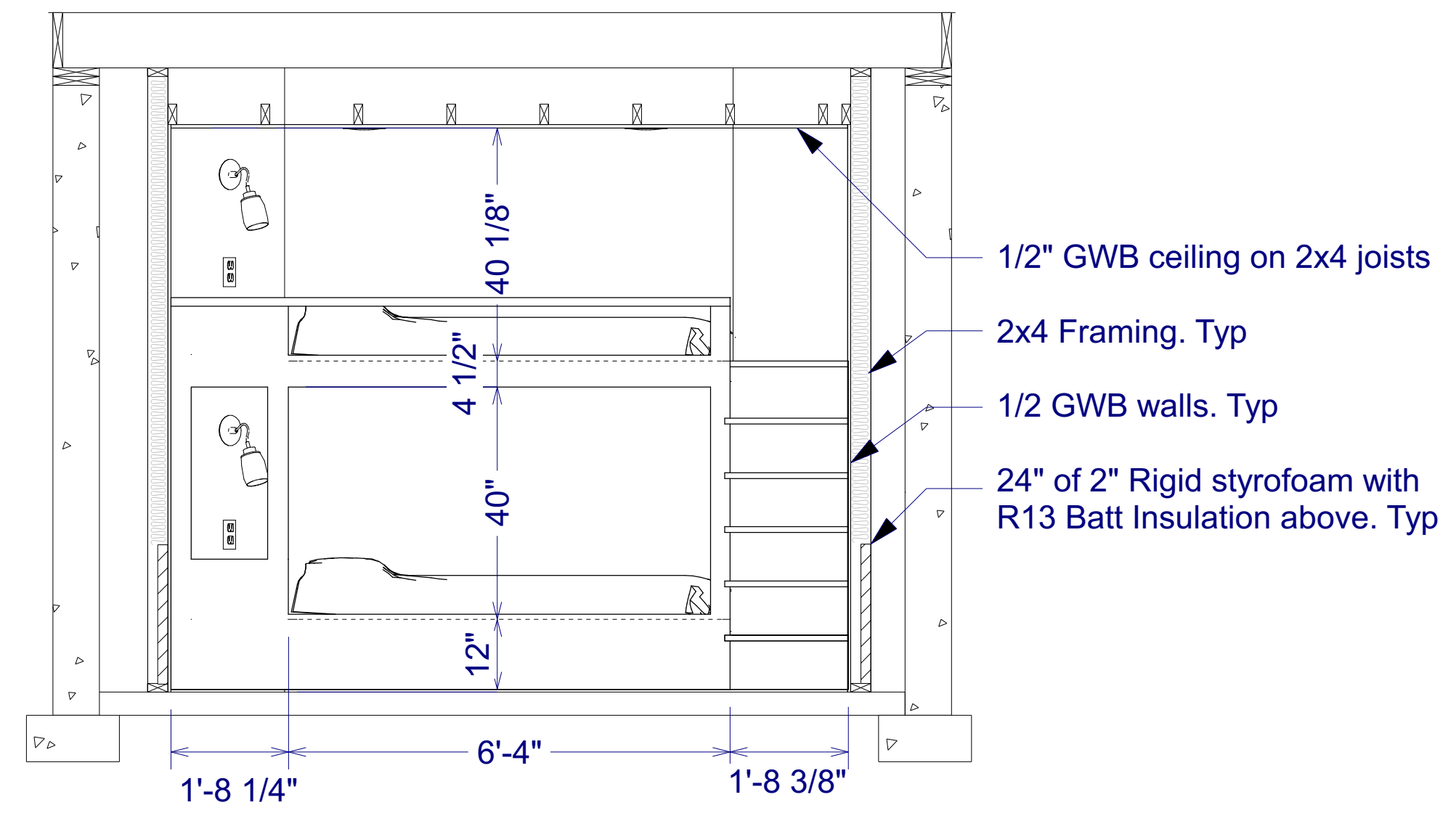
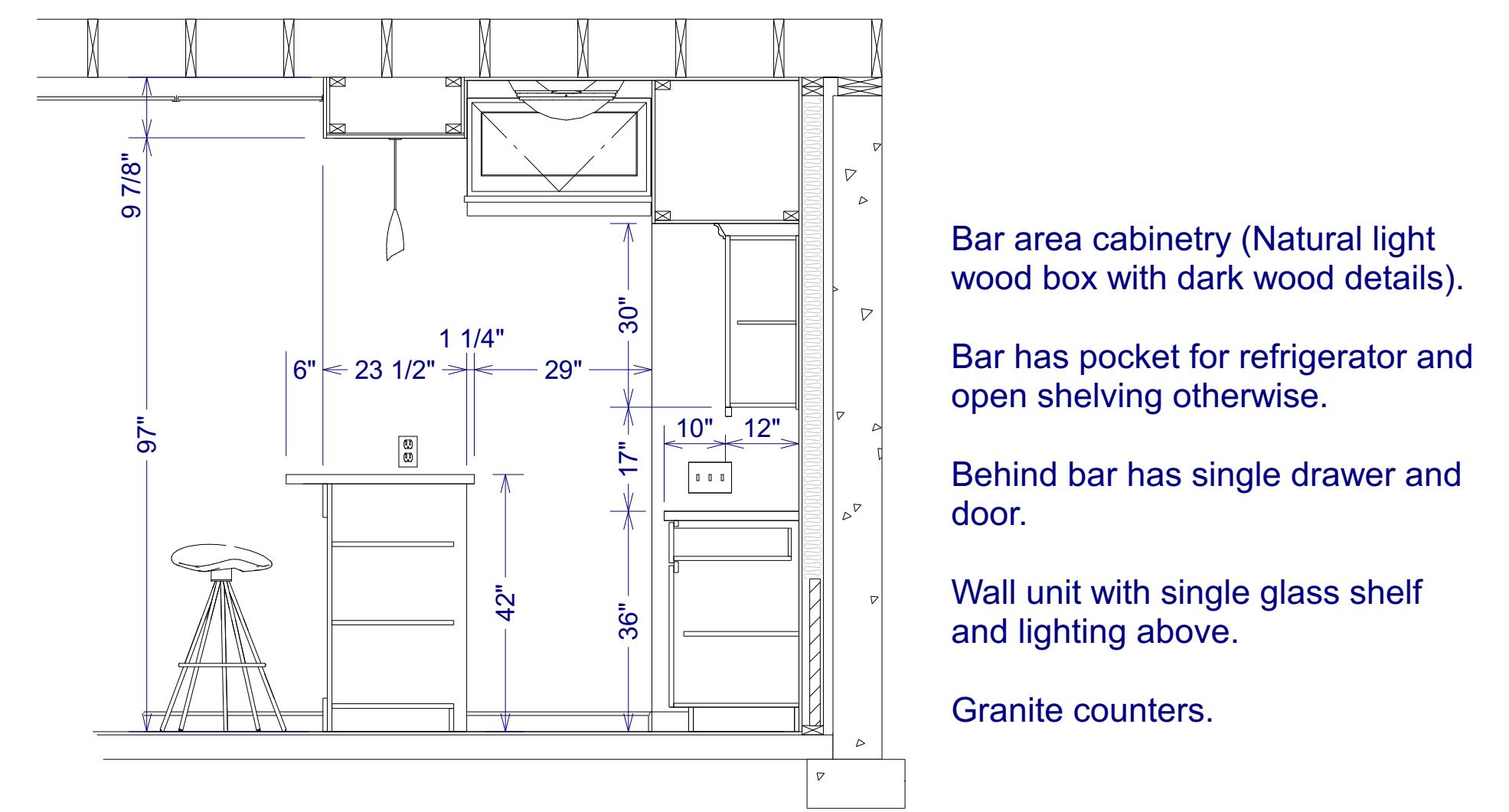


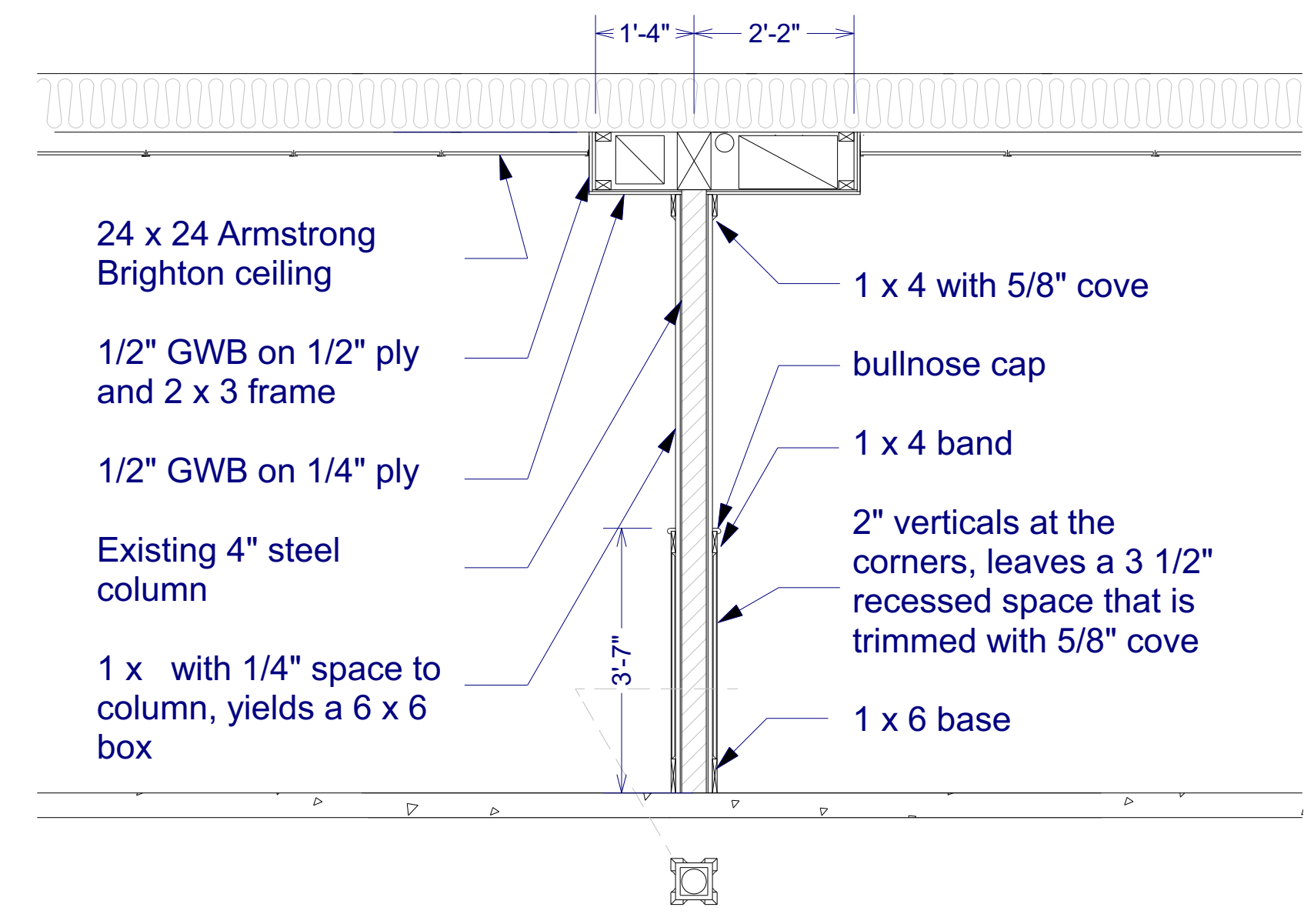
Basement Plan Scale: 1/4" = 1'



Section 1: Built-in Bunk Scale: 1/2" = 1'



Section 2: Bar Area Scale: 1/2" = 1'



Section 3: Chase and Column Wrap Scale: 1/2" = 1'

NUMBER	LABEL	QTY	FLOOR	SIZE	WIDTH	HEIGHT	R/O	DOOR SCHEDULE	DESCRIPTION	HEADER	THICKNESS	CODE	MANUFACTURER	COMMENTS
D07	2468	2	0	2468 R IN	28"	80"	30"X82 1/2"	HINGED-DOOR P04	2X6X33" (2)	1 3/8"				
D11	2668	1	0	2668 R IN	30"	80"	32"X82 1/2"	HINGED-DOOR P04	2X6X35" (2)	1 3/8"				
D14	3068	1	0	3068 L IN	36"	80"	38"X82 1/2"	HINGED-DOOR P04	2X6X41" (2)	1 3/8"				
D17	4068	1	0	4068 L/R IN	48"	80"	50"X82 1/2"	DOUBLE HINGED-DOOR P04	2X8X53" (2)	1 3/8"				

Copyright (c) 2012. All rights reserved.

**Webb Builders, Inc.**  
 Design, Drafting, Engineering,  
 General Contracting  
 516 - 982 - 8502

Revisions  
 11/12/12 Initial  
 11/17/12 Elevations  
 11/17/12 Shower  
 12/22/12 Bath Sls  
 8/5/15 Perm Finish Prelim  
 8/11/15 Bmnt Finish  
 10/12/15 Bmnt Details

Frankel Residence - Addition - East Hampton, NY

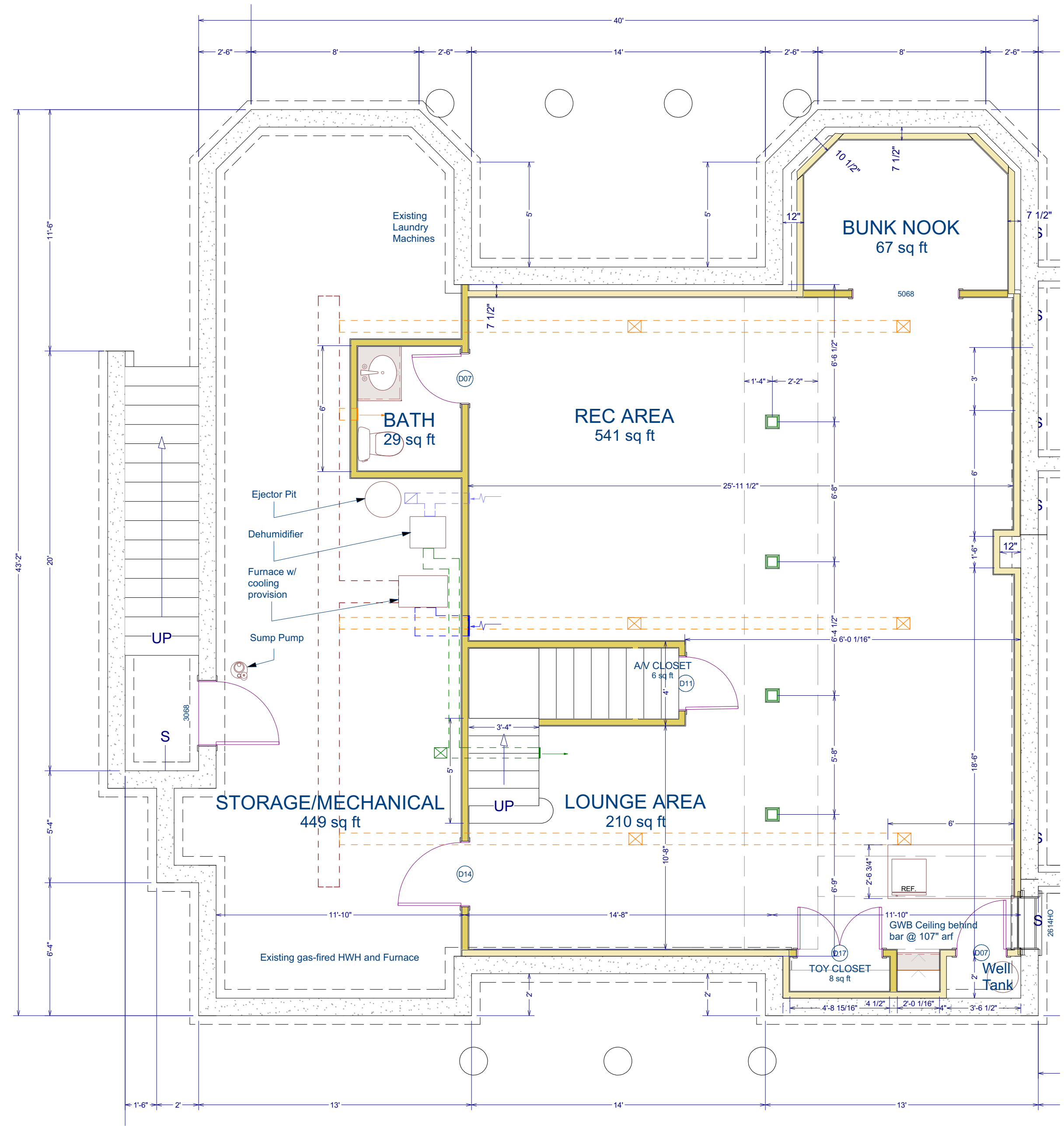
Date:  
10/12/15

Drawn By:  
DW

Scale:

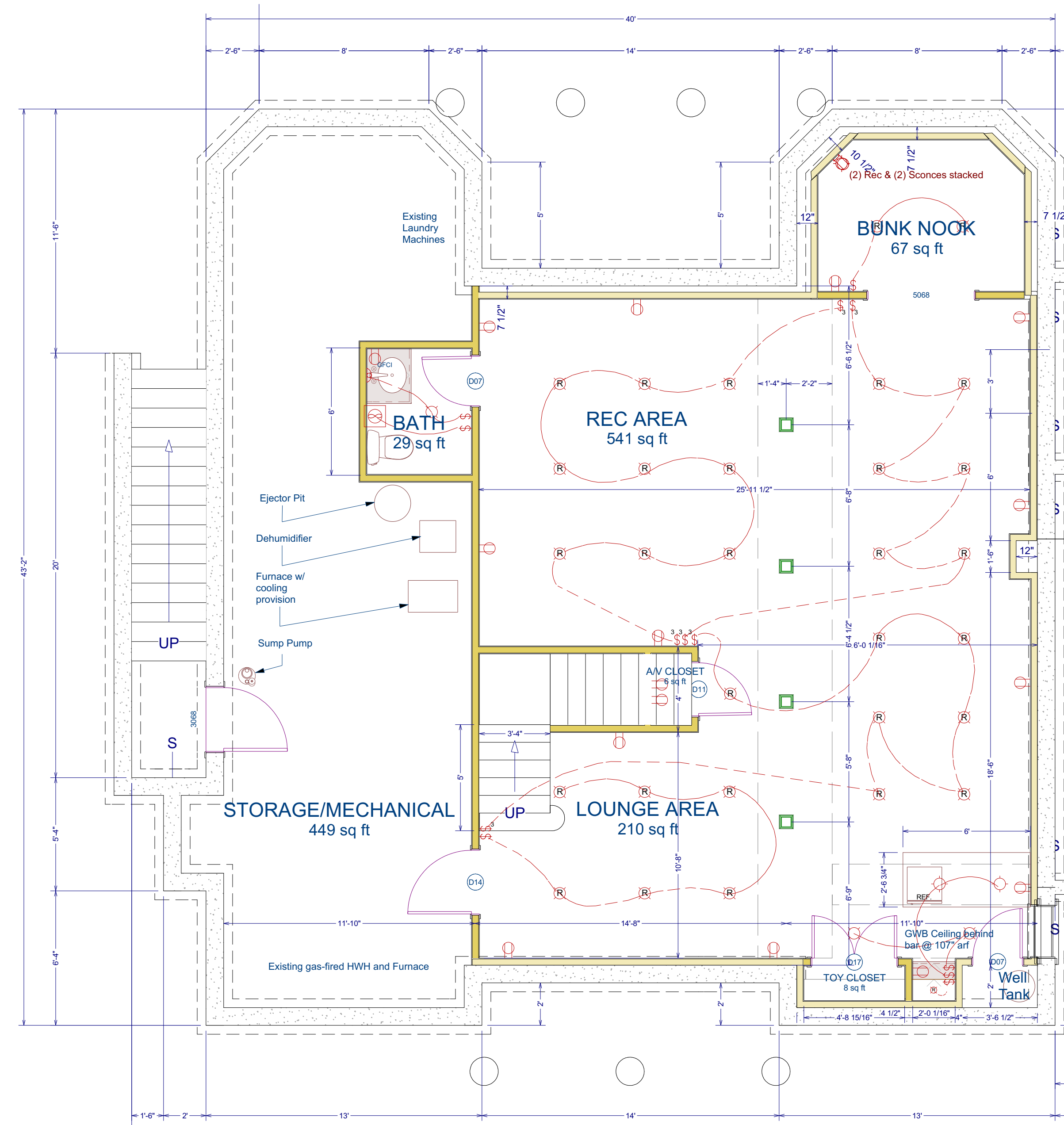
Sheet:  
A100

**Basement FI Plan & Details**



Basement Mechanical

Scale: 1/4" = 1'



Basement Electrical

Scale: 1/4" = 1'

Copyright (c) 2012. All rights reserved.

**Webb Builders, Inc.**  
 Design, Drafting, Engineering,  
 General Contracting  
 516 - 982 - 8502

Revisions  
 11/12/12 Initial  
 11/17/12 Elevations  
 12/20/12 Plumbing  
 8/5/15 Permit  
 9/11/15 Basement Finish Prelim  
 10/12/15 Basement Details

Frankel Residence - Addition - East Hampton, NY

Date:  
10/12/15

Drawn By:  
DW

Scale:

Sheet:  
A100.1

**Basement Elec & Mech**