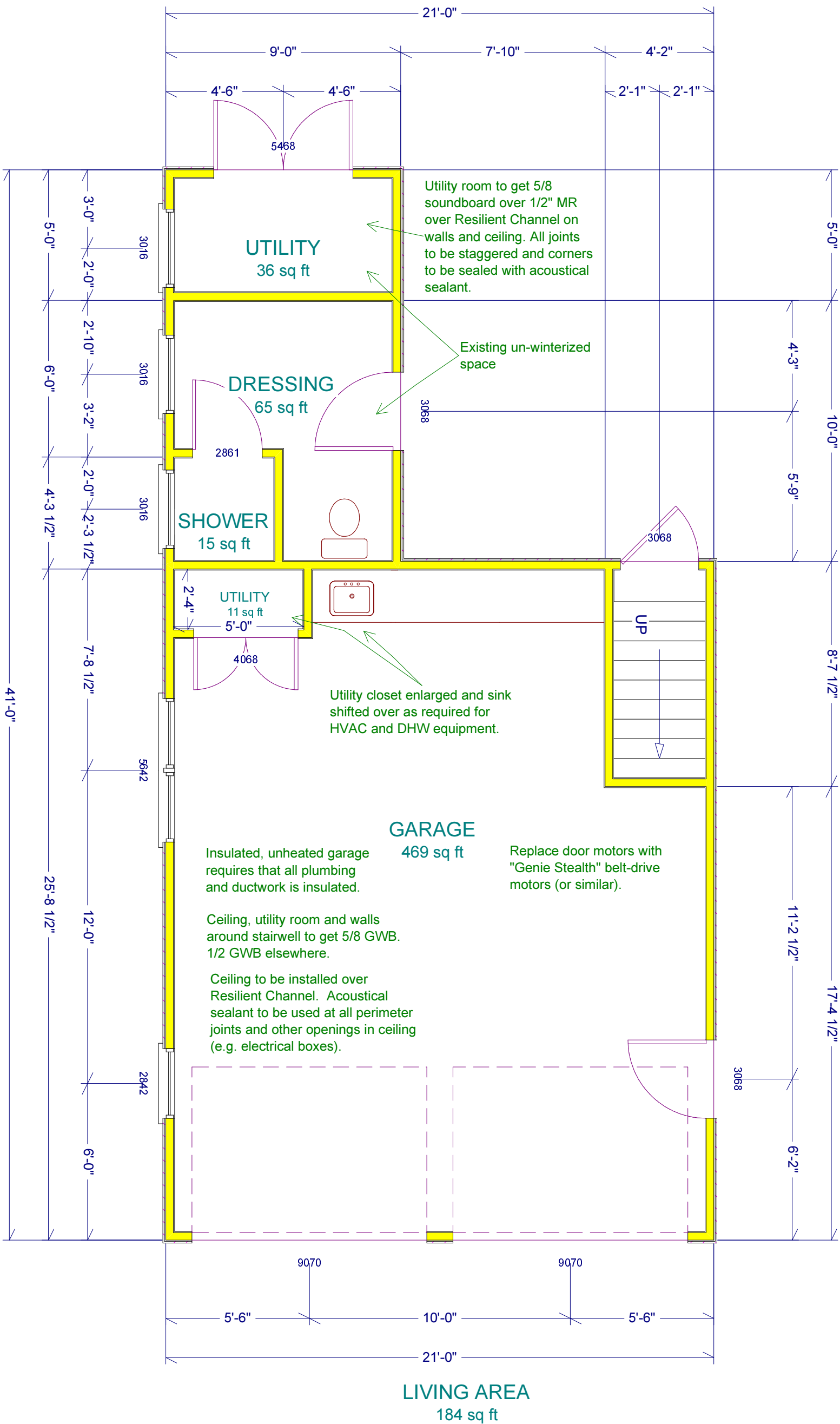


**Contents:**

- 1 - Isometric view
- 2 - First Floor Plan
- 3 - Second Floor Plan
- 4 - Elevations
- 5 - Elevations
- 6 - Elevations
- 7 - Specifications
- 8 - Interior Elevations
- 9 - Sections
- 10 - Electric

Accessory Structure Renovations	<small>Copyright (c) 2003. All rights reserved.</small>			
	<b>David A. Webb, Inc.</b> Design, Drafting, Engineering, General Contracting 516 - 982 - 8502			
Isometric View	<small>Date</small> 9/4/03	<small>Drawn by</small> DW	<small>Scale</small> 1/4" = 1'	<small>Sheet</small> 1



Accessory Structure Renovations

First Floor Plan

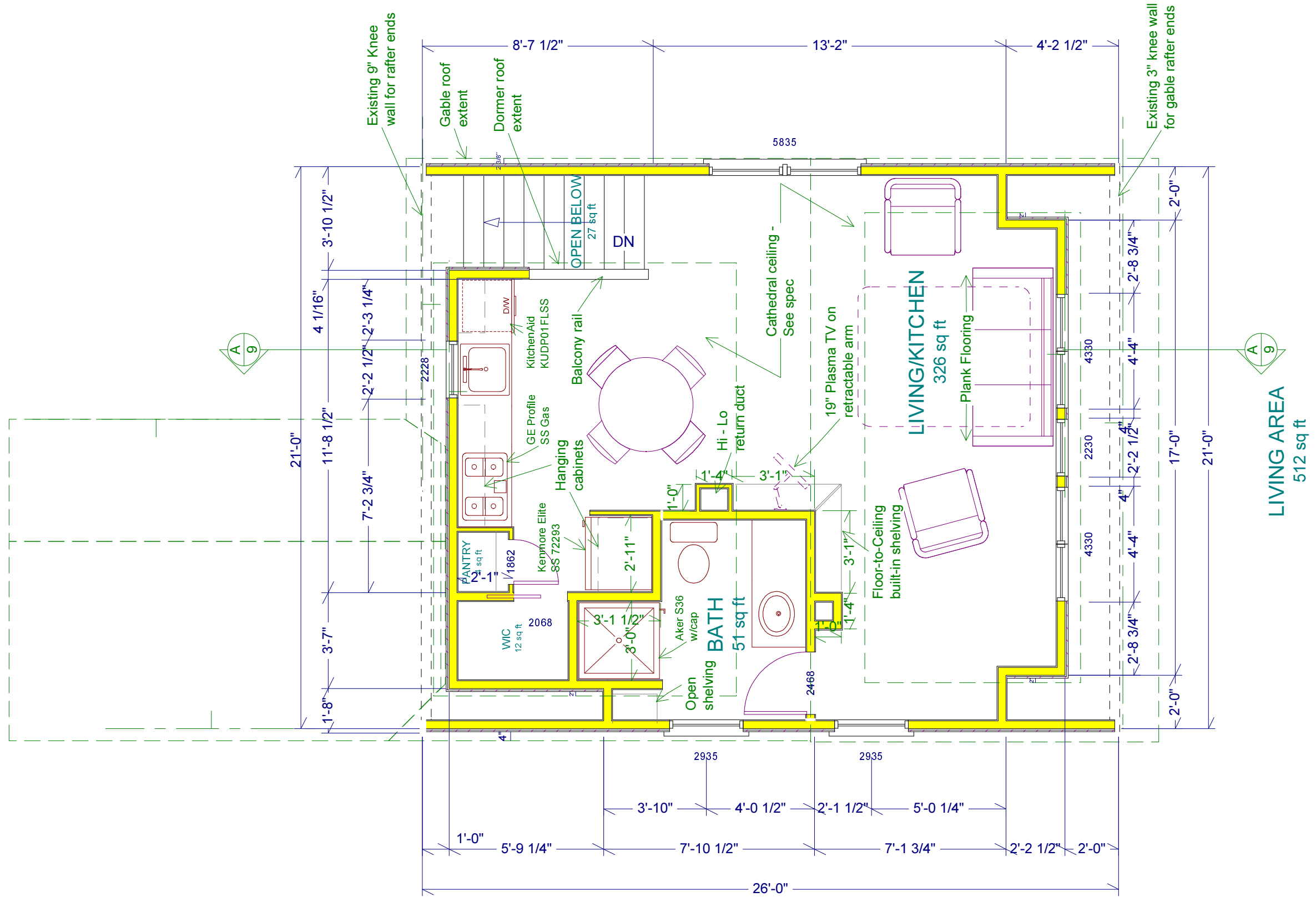
**David A. Webb, Inc.**

Design, Drafting, Engineering,  
General Contracting

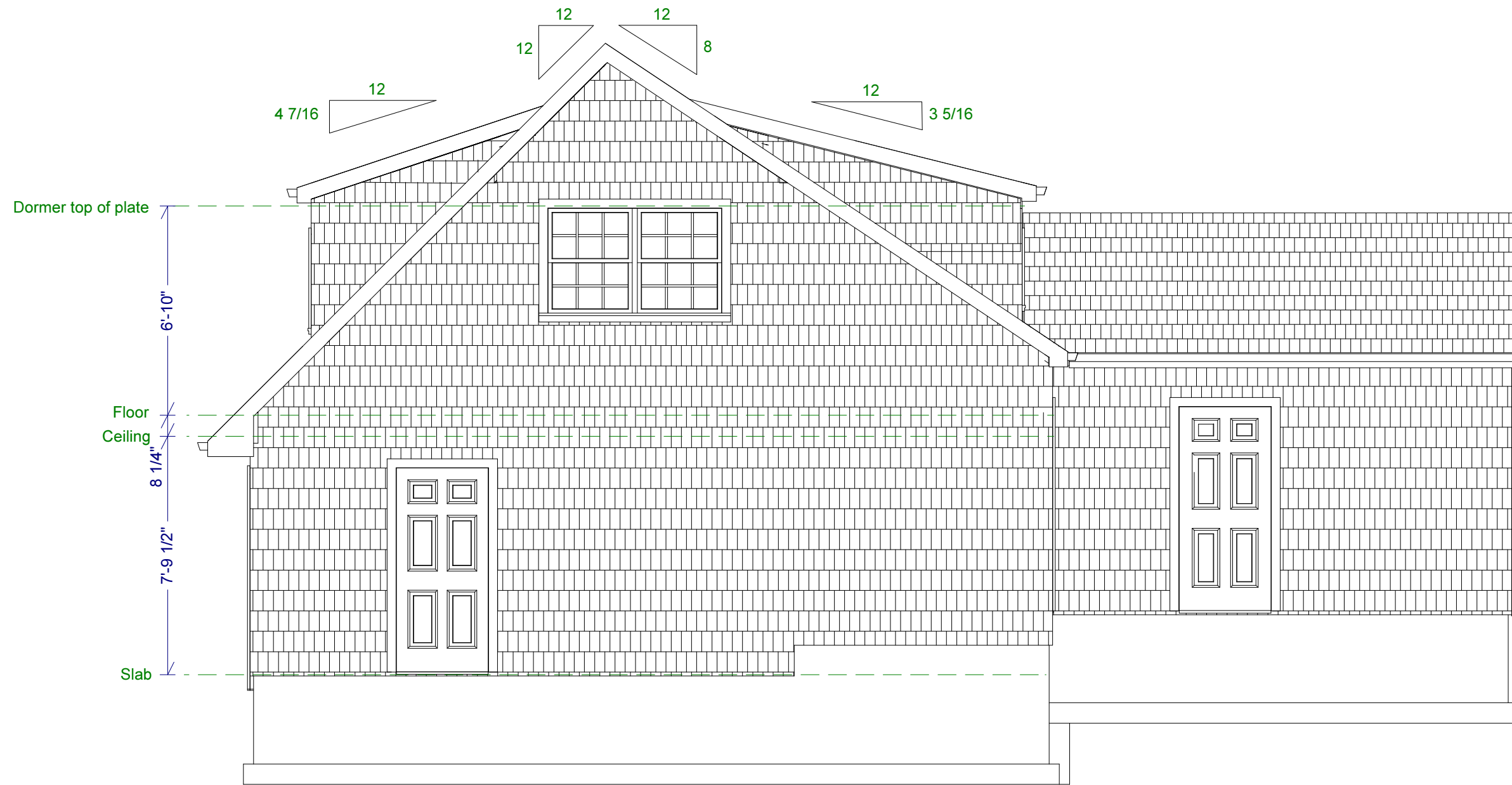
516 - 982 - 8502

Copyright (c) 2003. All rights reserved.

Date	Drawn by	Scale	Sheet
9/4/03	DW	1/4" = 1'	2

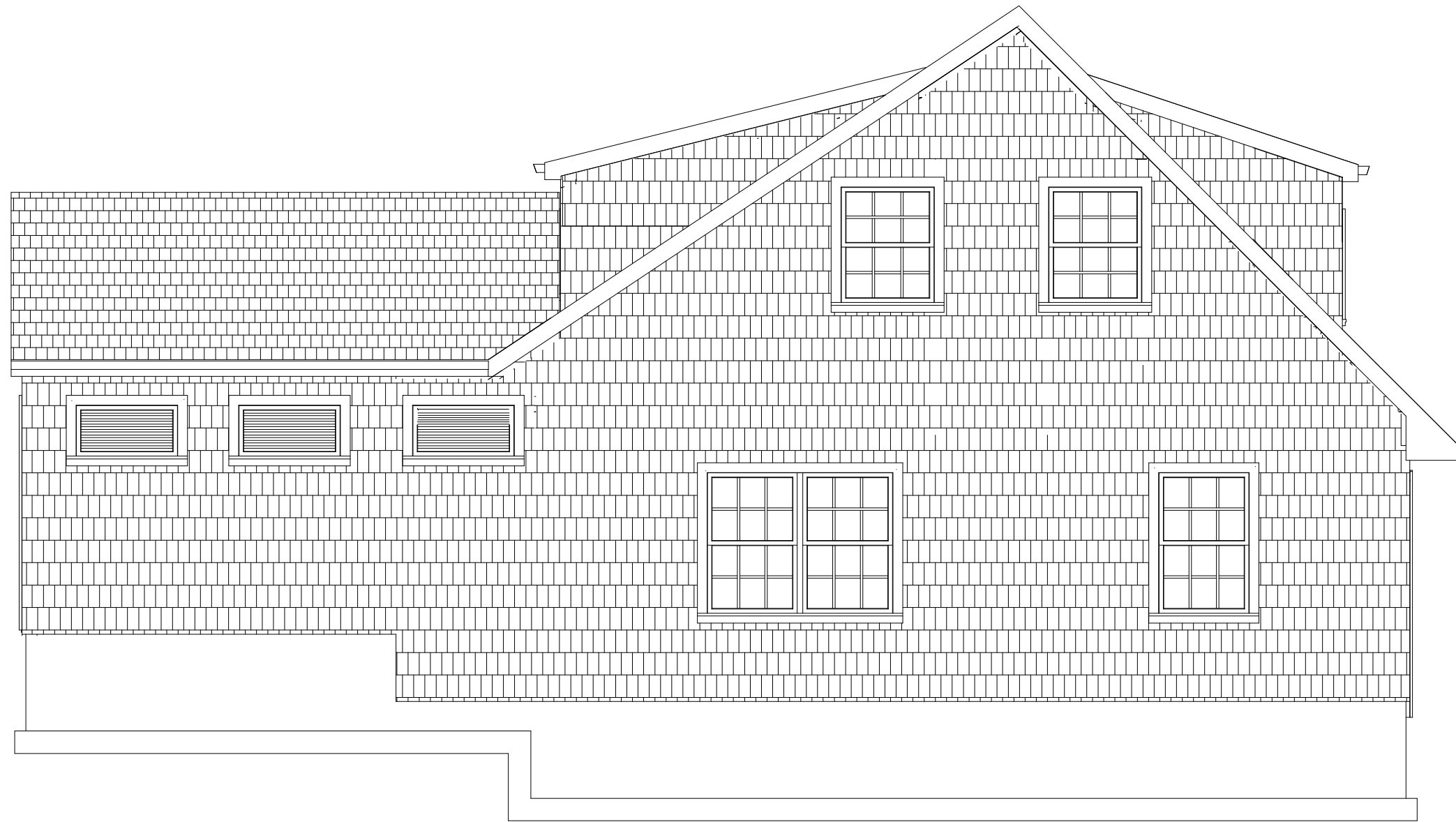


Accessory Structure Renovations		Copyright (c) 2003. All rights reserved.		
		<b>David A. Webb, Inc.</b> Design, Drafting, Engineering, General Contracting 516 - 982 - 8502		
Second Floor Plan	Date	Drawn by	Scale	Sheet
	9/4/03	DW	1/4" = 1'	3



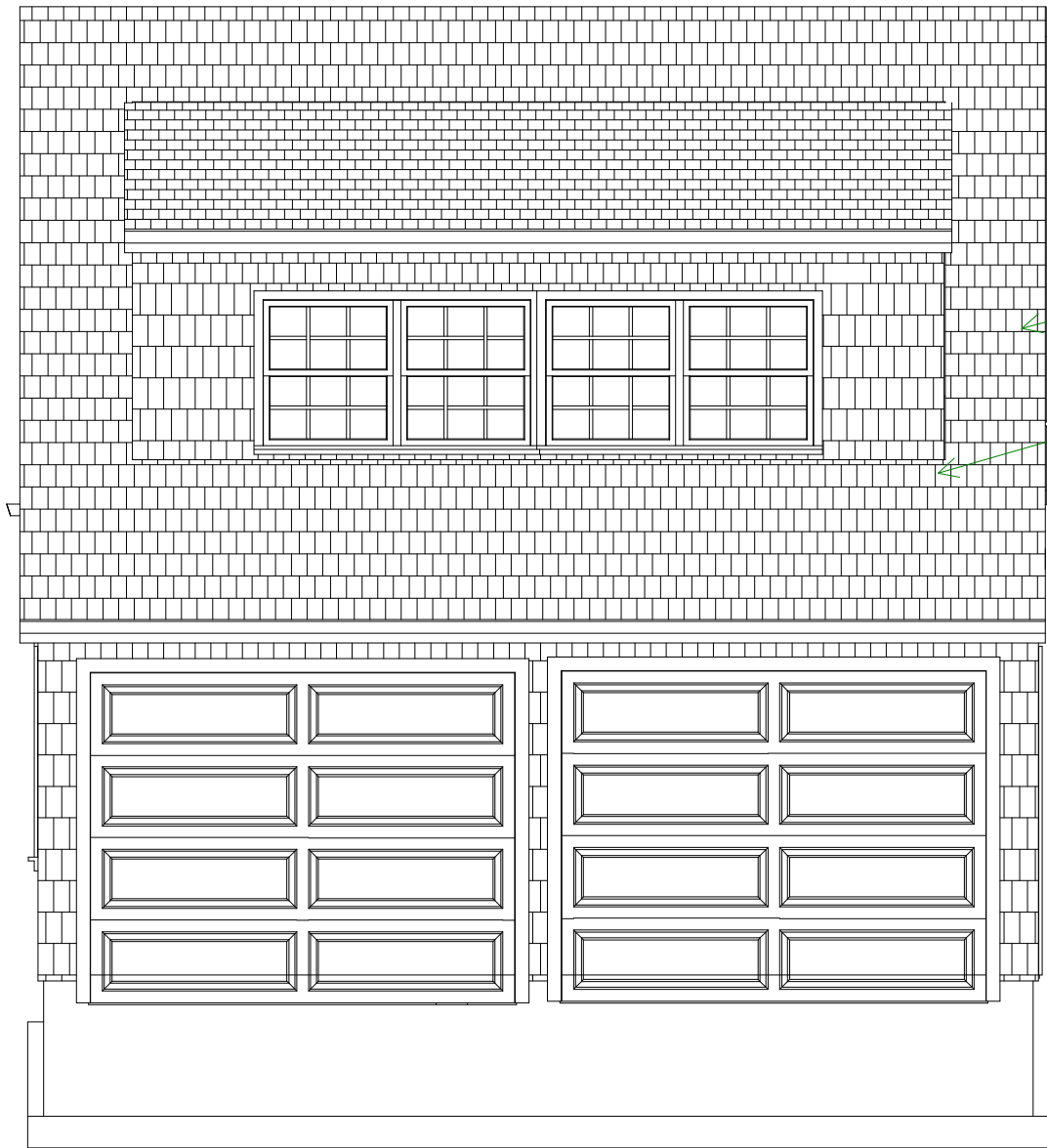
North Side

Accessory Structure Renovations	<small>Copyright (c) 2003. All rights reserved.</small>			
	<b>David A. Webb, Inc.</b> Design, Drafting, Engineering, General Contracting 516 - 982 - 8502			
Elevations	Date	Drawn by	Scale	Sheet
	9/4/03	DW	1/4" = 1'	4



South Side

Accessory Structure Renovations	<small>Copyright (c) 2003. All rights reserved.</small>			
	<b>David A. Webb, Inc.</b> Design, Drafting, Engineering, General Contracting 516 - 982 - 8502			
Elevations	Date	Drawn by	Scale	Sheet
	9/4/03	DW	1/4" = 1'	5



East Side

West Dormer: GAF Liberty SBS Membrane (Color: Weathered Wood) on GAF weather-shield sub-roof on 1/2" ply

Gable Roofs and East Dormer: 18" Cedar Perfections on 5/4 x 3 lath

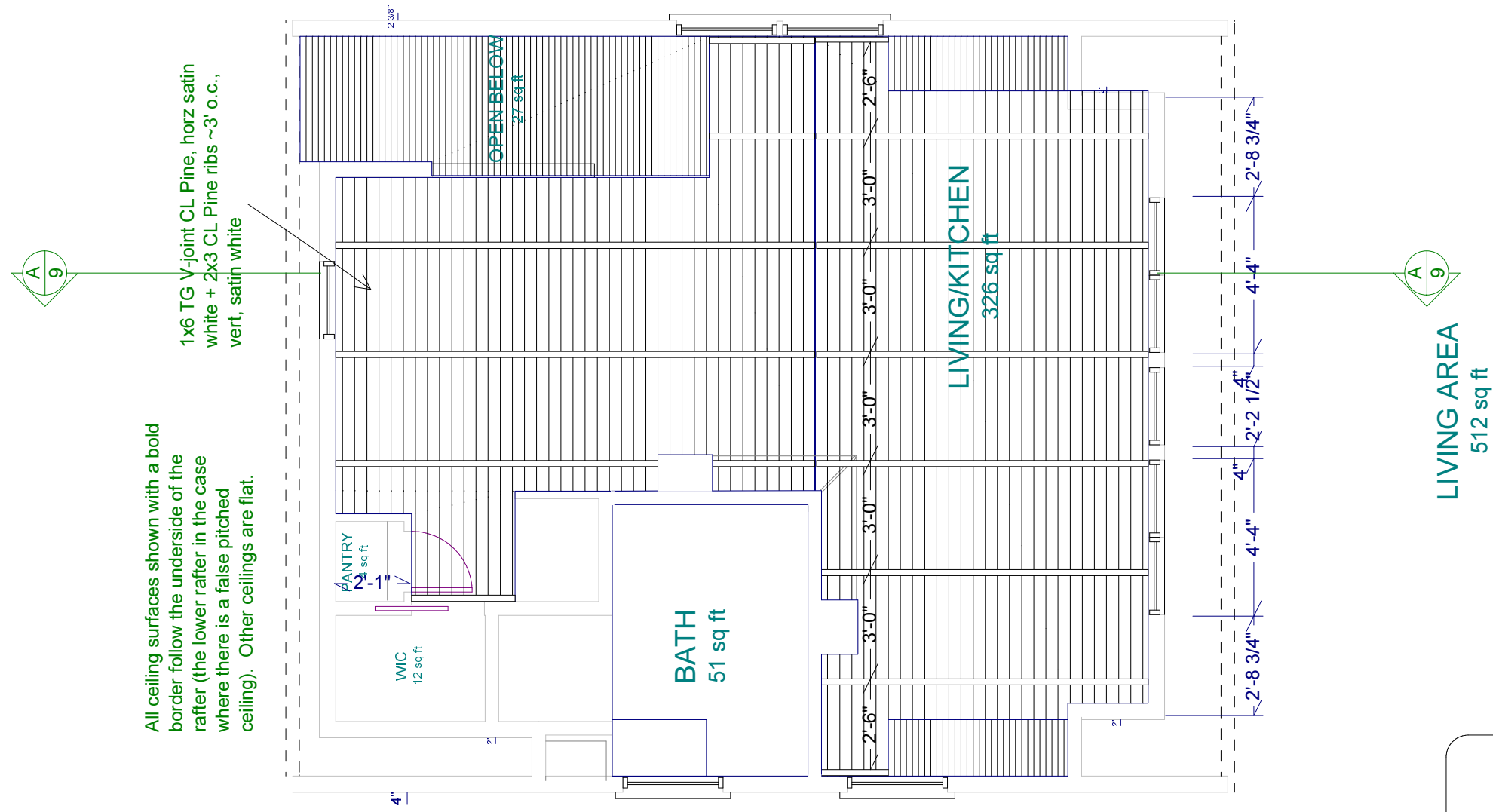
Siding: 18" Cedar Perfections on 1/2" ply



West Side

Accessory Structure Renovations	<small>Copyright (c) 2003. All rights reserved.</small>			
	<b>David A. Webb, Inc.</b> Design, Drafting, Engineering, General Contracting 516 - 982 - 8502			
Elevations	Date	Drawn by	Scale	Sheet
	9/4/03	DW	1/4" = 1'	6

ROOM	FL	FLOORING	WALLS	CEILING	TRIM (BASE, CASE, CROWN)
Garage	1	n/a	1/2" (5/8 where req'd) GWB, flat white	5/8" GWB flat white	Clam, Clam, n/a, gloss white
LR/Kitchen	2	Random-width antique pine plank	Random-width T&G CM CL Pine, vert, satin white	1x6 TG V-joint CL Pine, horz satin white + 2x3 CL Pine ribs ~3' o.c., vert, satin white	TBD,TBD,n/a, gloss white
Entry Stairs	1	Antique pine plank	Random-width T&G CM CL Pine, vert, satin white	1x6 TG V-joint CL Pine, horz satin white + 2x3 CL Pine ribs ~3' o.c., vert, satin white	TBD,TBD,n/a, gloss white
Closets	2	Random-width antique pine plank	1/2" GWB, flat white	1/2" GWB flat white	TBD,TBD,n/a, gloss white
Bath	2	Ceramic Tile TBD	1/2" MR GWB (1/2" Dura. in shower), eggshell white	1/2" MR GWB eggshell white	TBD,TBD,TBD, gloss white

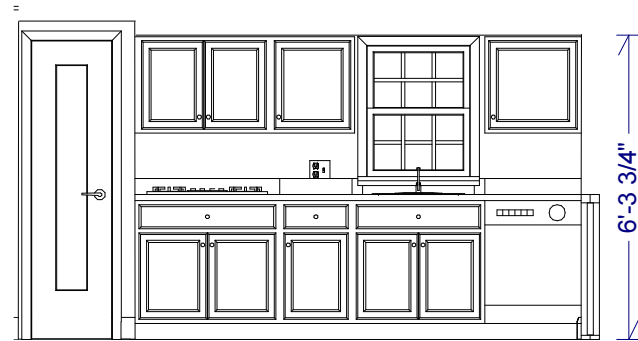
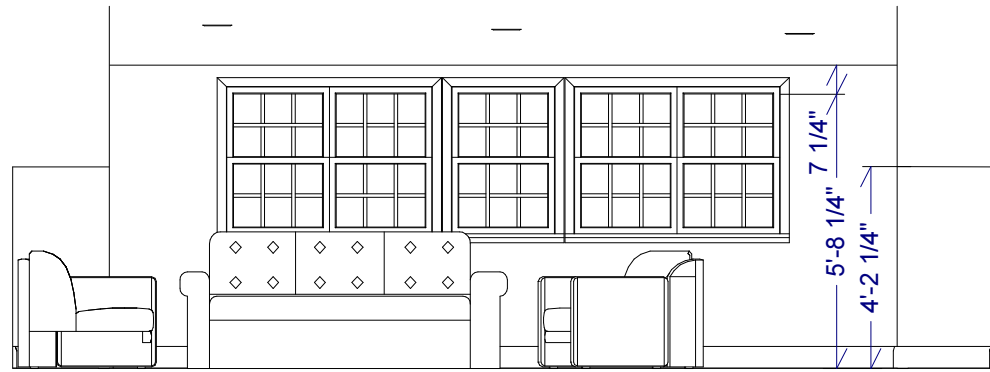


All ceiling surfaces shown with a bold border follow the underside of the rafter (the lower rafter in the case where there is a false pitched ceiling). Other ceilings are flat.

Reflected Ceiling Plan

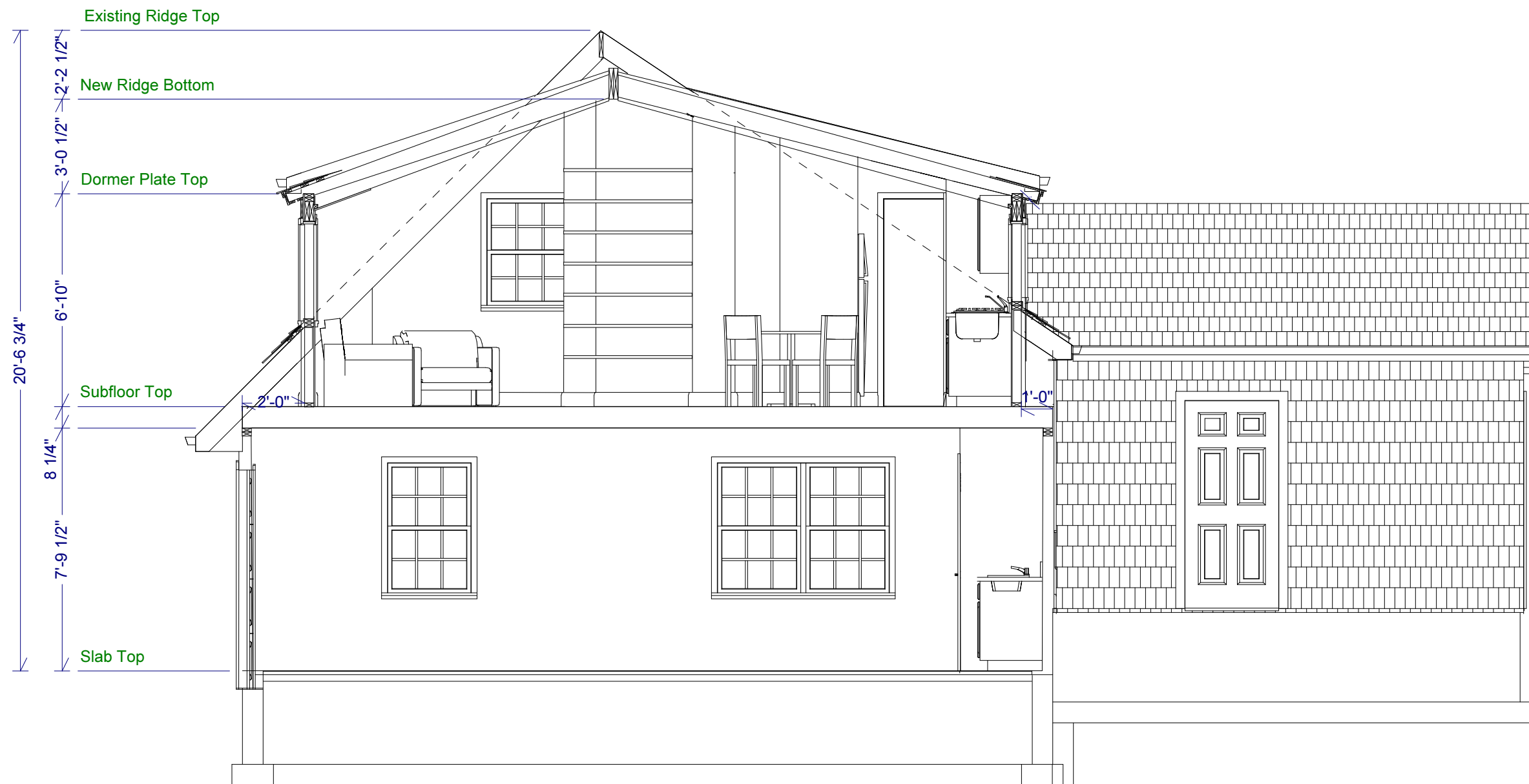
LIVING AREA  
512 sq ft

Accessory Structure Renovations	Copyright (c) 2003. All rights reserved. <b>David A. Webb, Inc.</b> Design, Drafting, Engineering, General Contracting 516 - 982 - 8502			
	Date	Drawn by	Scale	Sheet
Specifications	9/4/03	DW	1/4" = 1'	7



Accessory Structure Renovations	<small>Copyright (c) 2003. All rights reserved.</small> <b>David A. Webb, Inc.</b> Design, Drafting, Engineering, General Contracting 516 - 982 - 8502			
	Date	Drawn by	Scale	Sheet
Interior Elevations	9/4/03	DW	1/4" = 1'	8

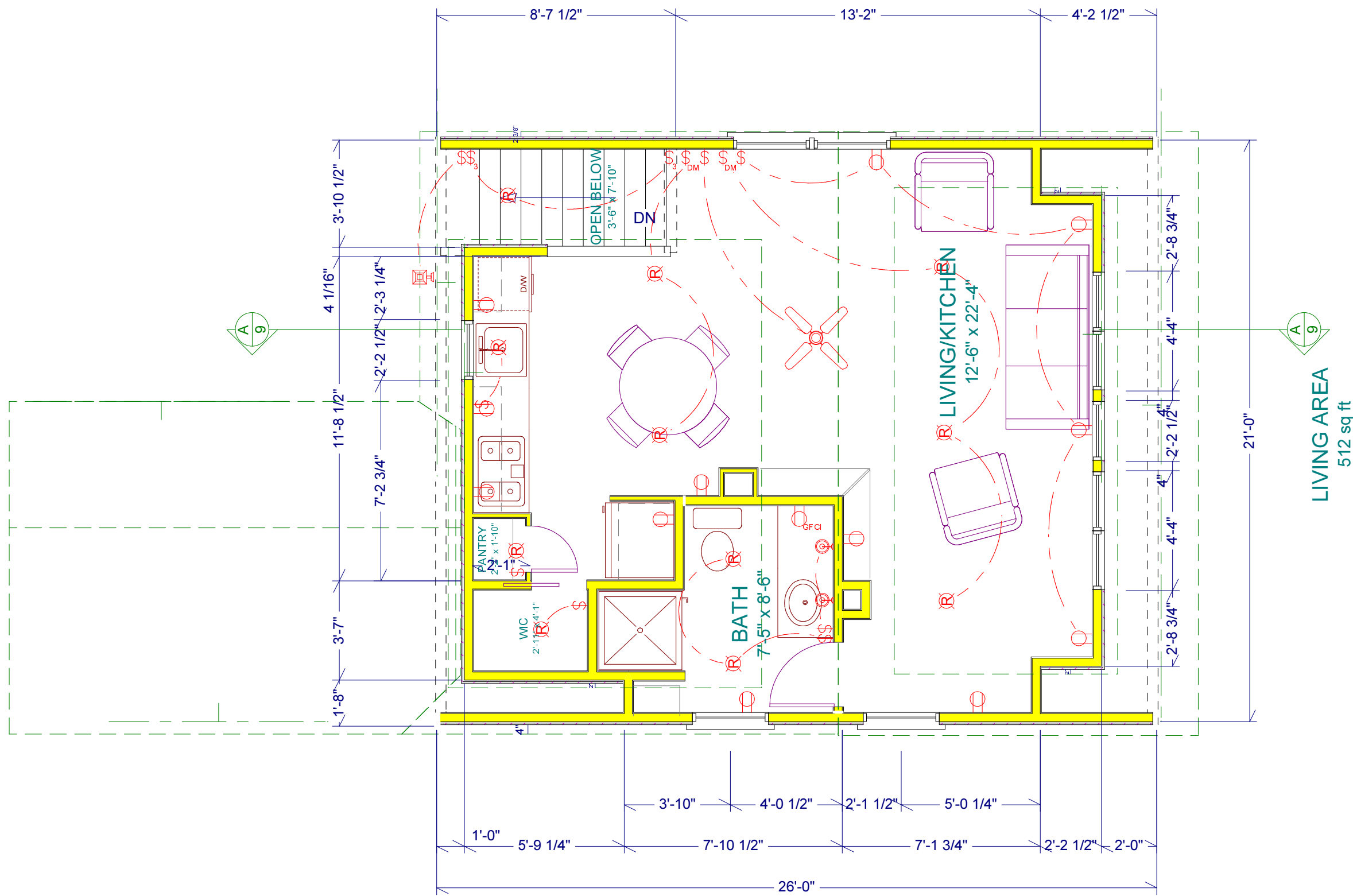




### Section A

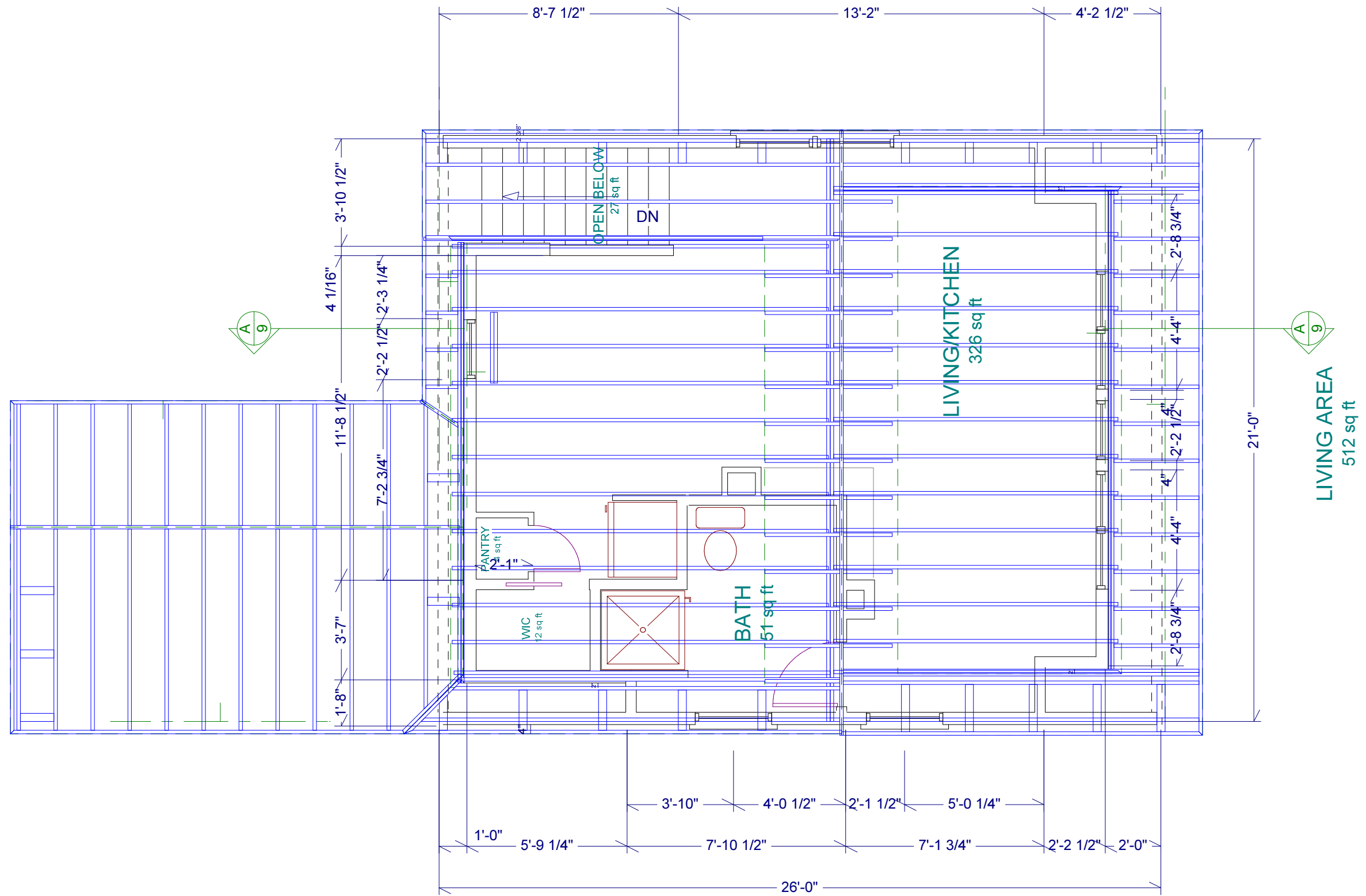
(Revised dormer roof super-imposed over previous section view)

Accessory Structure Renovations	<small>Copyright (c) 2003. All rights reserved.</small>			
	<b>David A. Webb, Inc.</b> Design, Drafting, Engineering, General Contracting 516 - 982 - 8502			
Sections	Date	Drawn by	Scale	Sheet
	9/4/03	DW	1/4" = 1'	9

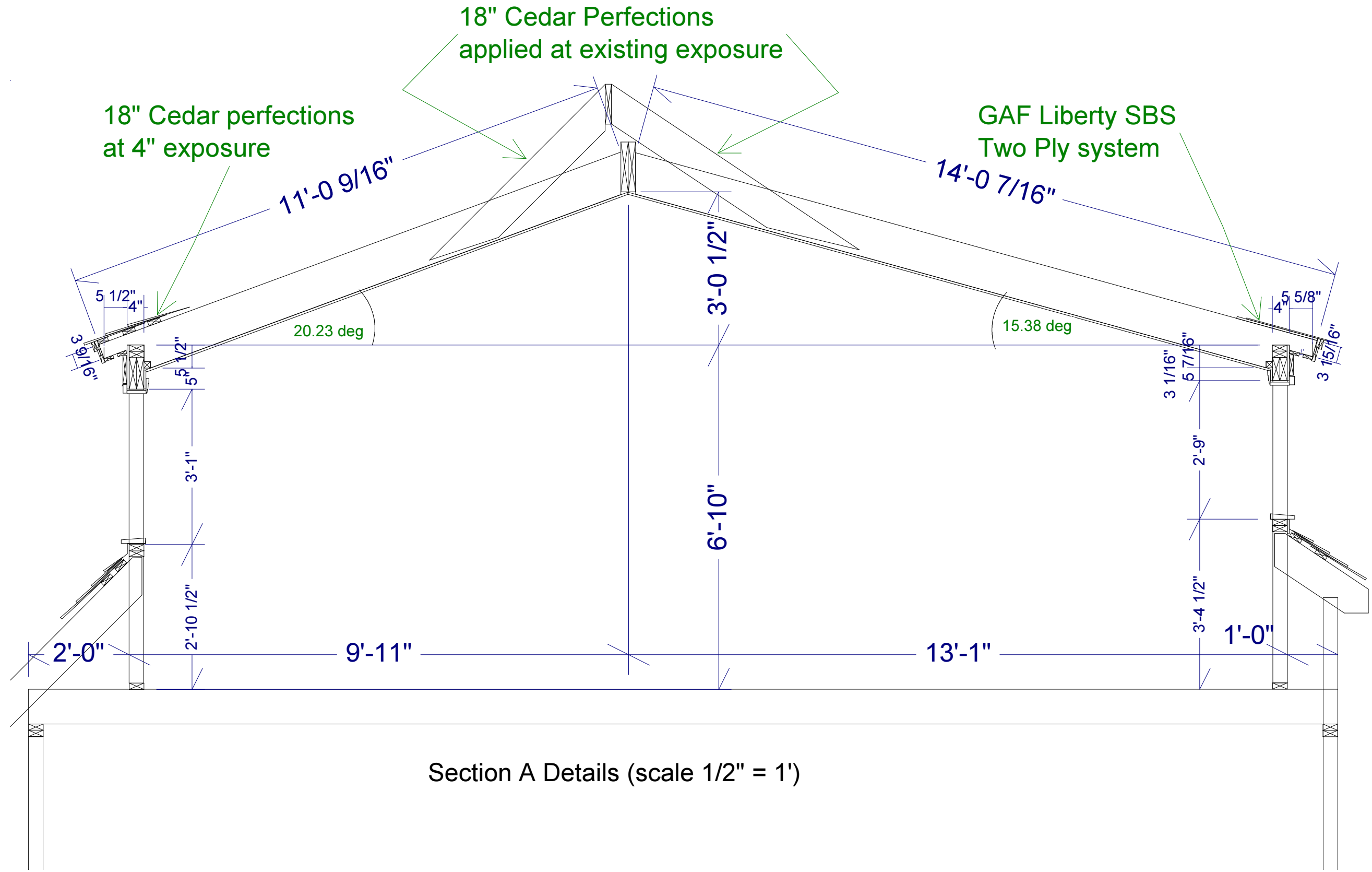


LIVING AREA  
512 sq ft

Accessory Structure Renovations	Copyright (c) 2003. All rights reserved.			
	<b>David A. Webb, Inc.</b> Design, Drafting, Engineering, General Contracting 516 - 982 - 8502			
Electrical Plan	Date	Drawn by	Scale	Sheet
	9/4/03	DW	1/4" = 1'	10



Accessory Structure Renovations		<small>Copyright (c) 2003. All rights reserved.</small> <b>David A. Webb, Inc.</b> Design, Drafting, Engineering, General Contracting 516 - 982 - 8502			
		Date	Drawn by	Scale	Sheet
Roof Framing		9/4/03	DW	1/4" = 1'	



Section A Details (scale 1/2" = 1')

Accessory Structure Renovations		<small>Copyright (c) 2003. All rights reserved.</small> <b>David A. Webb, Inc.</b> Design, Drafting, Engineering, General Contracting 516 - 982 - 8502			
		Date	Drawn by	Scale	Sheet
		9/4/03	DW	1/4" = 1'	