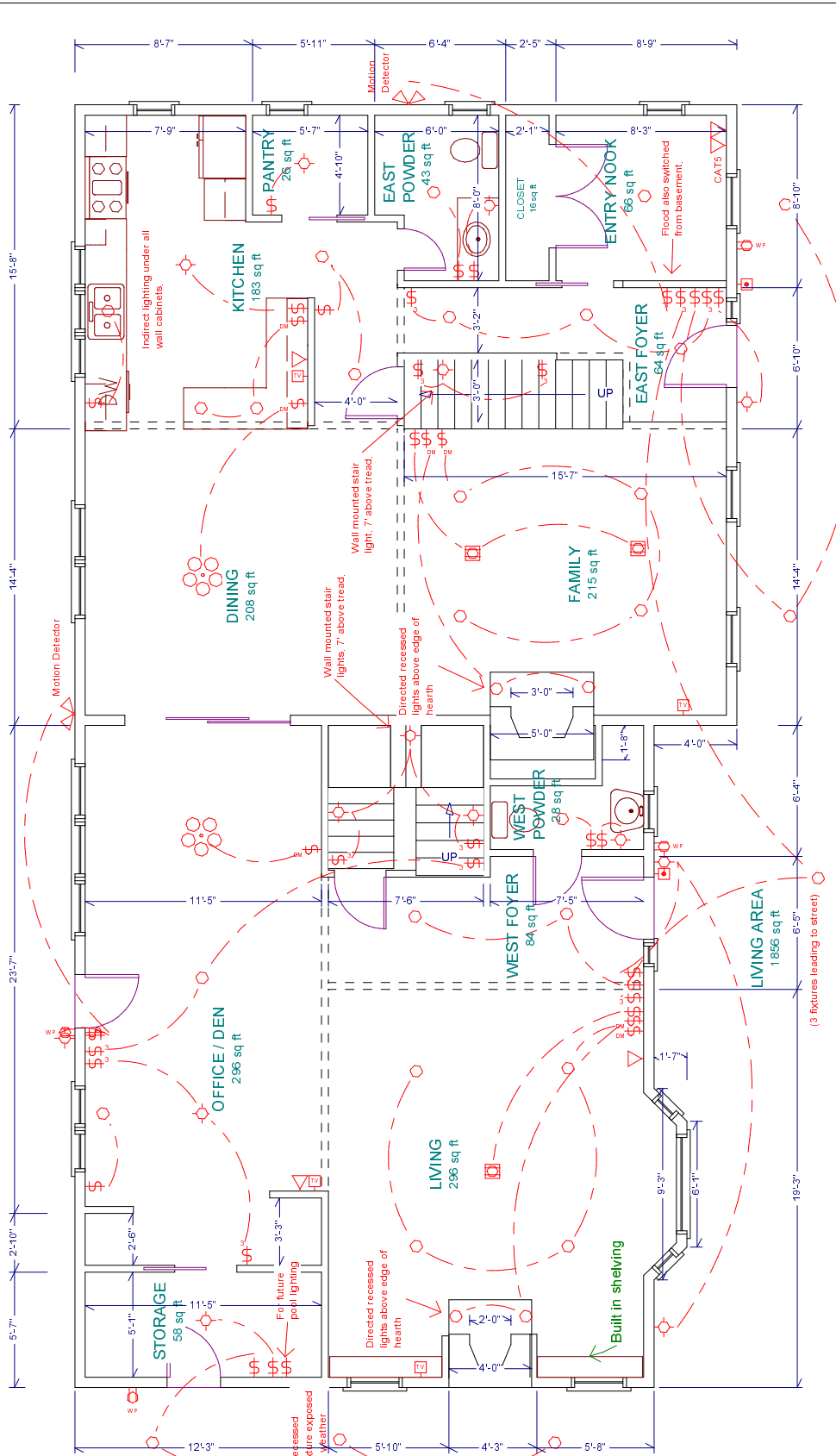
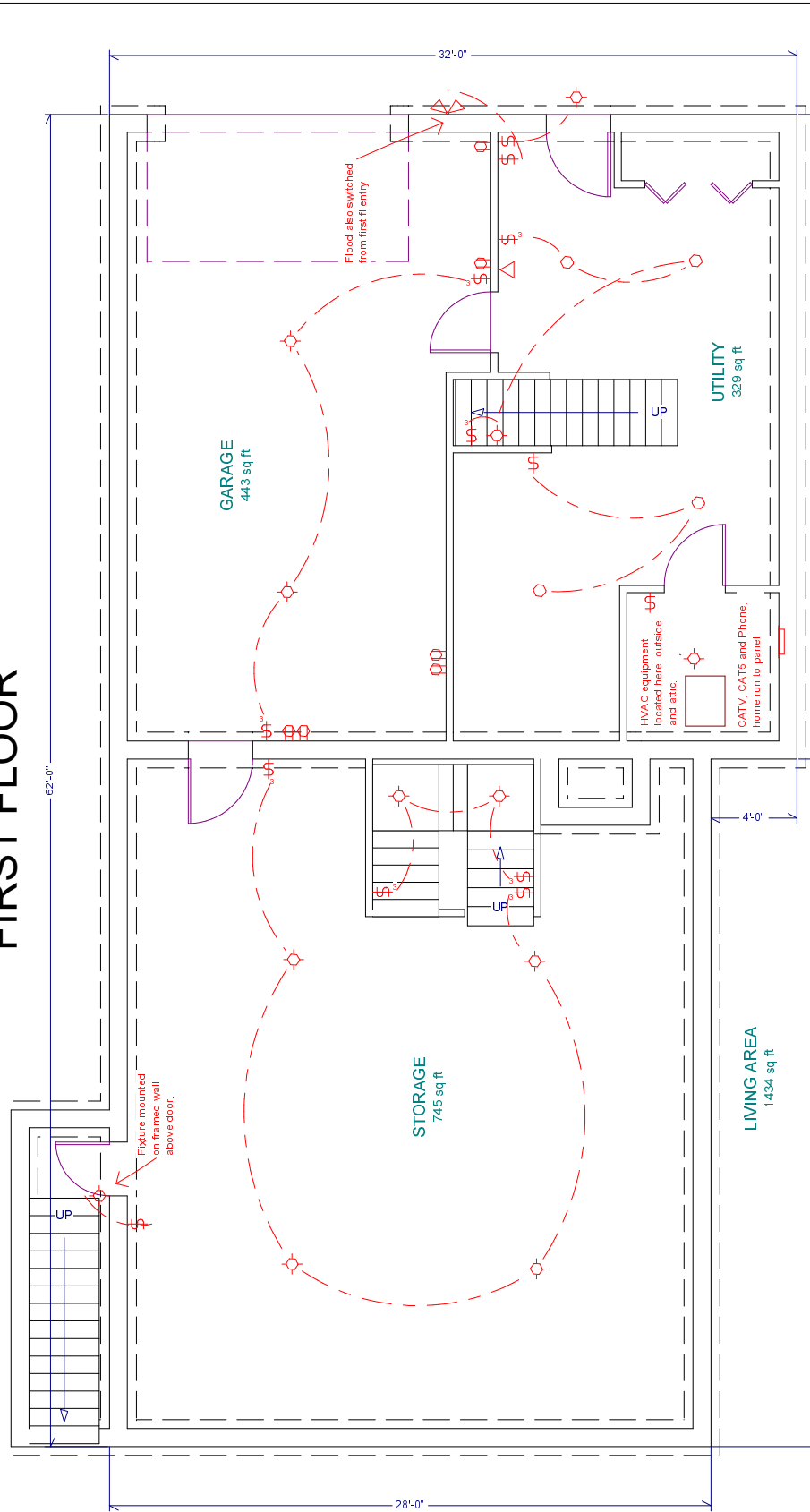


SECOND FLOOR



FIRST FLOOR



BASEMENT

Key:
 ○ Recessed fixture
 ⦿ Ceiling or Wall mounted fixture

General Specifications:

- Outlet placement to conform to applicable building codes.
- All switched duplex outlets contain one unswitched receptacle.
- CAT5 receptacles are 8-wire RJ45.

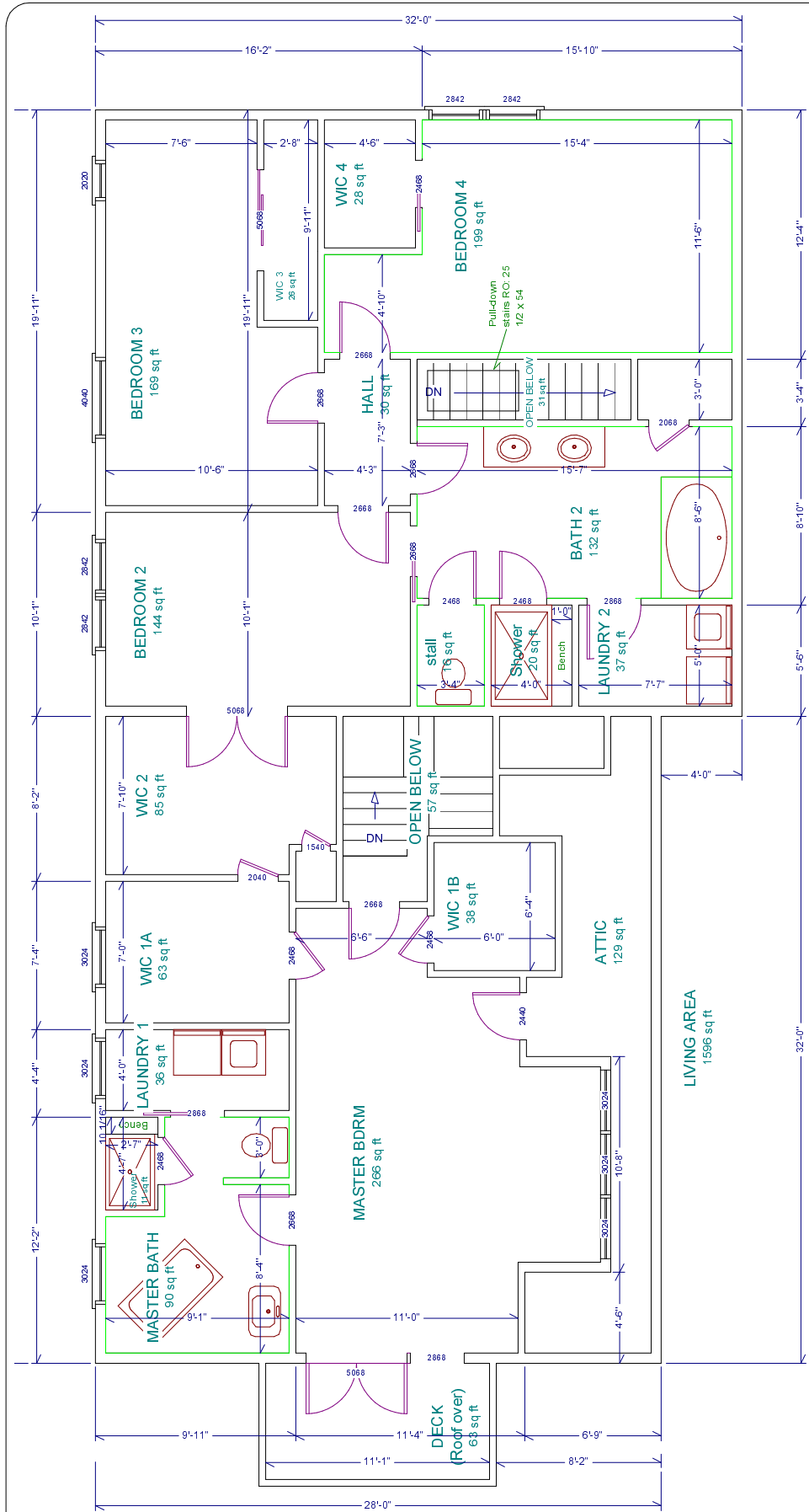
BC Residence
 East Hampton

David A. Webb, Inc.
 Architectural Drafting, Professional
 Engineering, General Contracting
 516 - 982 - 8502

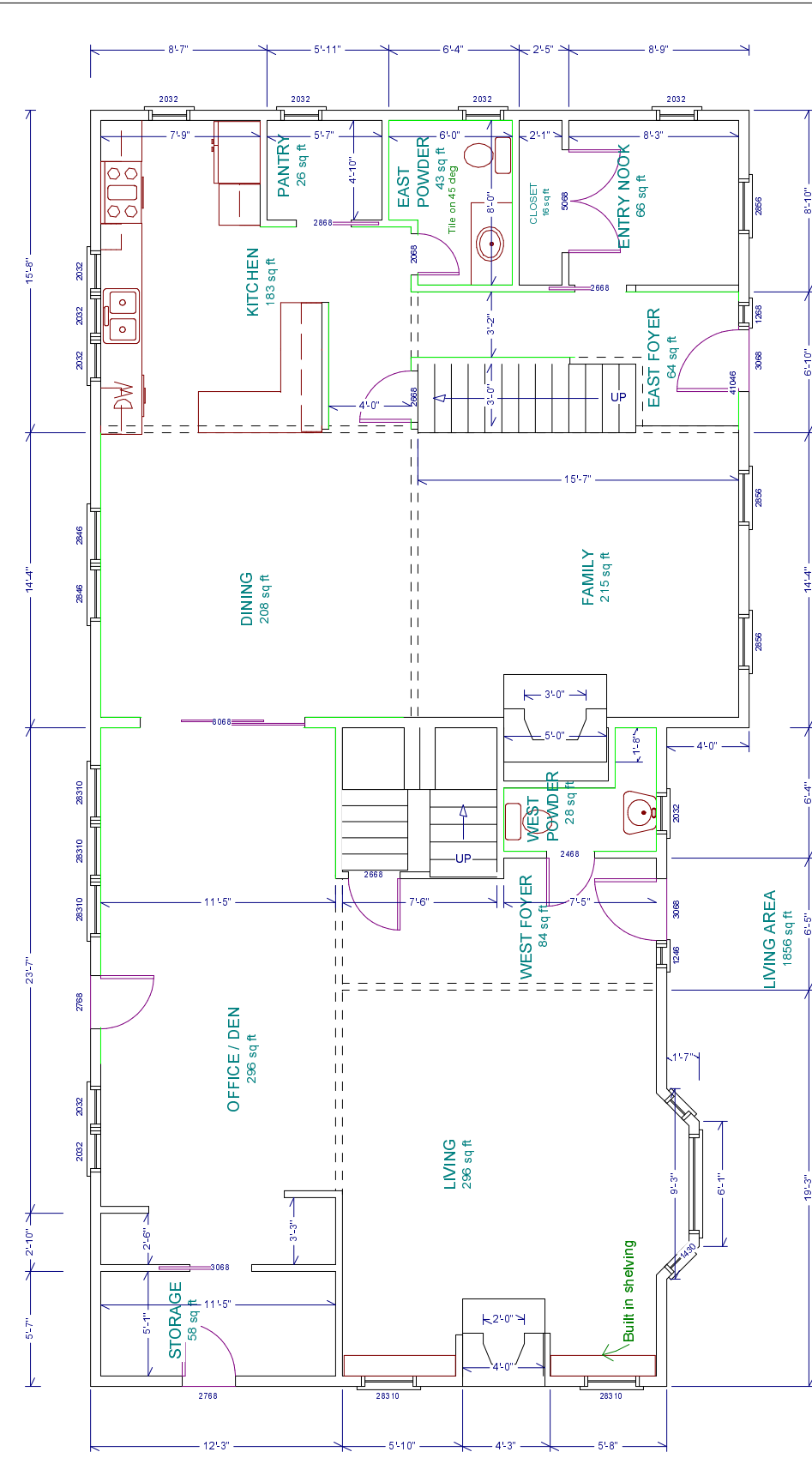
| | | | |
|---------|----------|-----------|--------|
| Date | Drawn by | Scale | Sheet |
| 10/8/01 | DW | 1/8" = 1' | 1 of 2 |

Electrical Plan

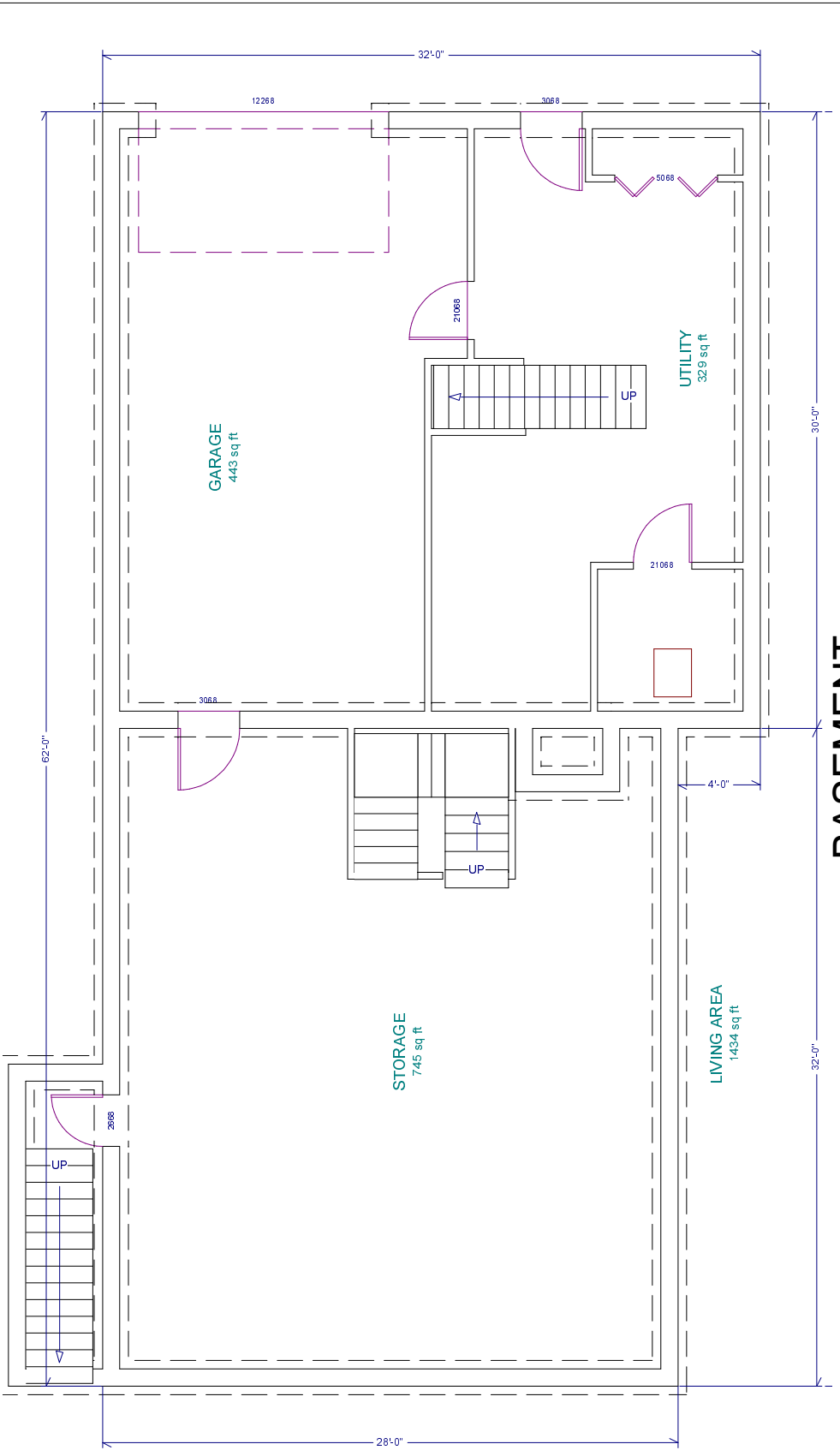
Copyright (c) 2001. All rights reserved.



SECOND FLOOR



FIRST FLOOR



BASEMENT

Key:
Green walls = Wainscoting

BC Residence
East Hampton

Copyright (c) 2001. All rights reserved.
David A. Webb, Inc.
Architectural Drafting, Professional
Engineering, General Contracting
516 - 982 - 8502

Floor/Wall Finish Details

| Date | Drawn by | Scale | Sheet |
|---------|----------|-----------|--------|
| 10/8/01 | DW | 1/8" = 1' | 2 of 2 |